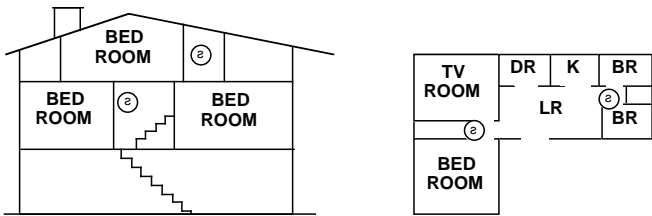


Fire Safety

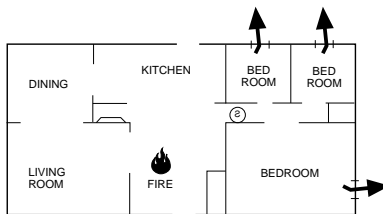
Residential fire is a leading cause of accidental death. Most fire related deaths occur at night when the occupants suffocate in their sleep from smoke and deadly gases, rather than from burns. To help reduce this risk, the following three-step program should be implemented:

1. Minimize fire hazards around the home. Smoking in bed, cleaning with flammable liquids such as gasoline, leaving children home alone, and unsafe holiday decorations are some of the more common causes of household fire.
2. Install a fire warning system. The primary purpose of this system is to protect lives, not property, by giving the earliest possible warning of the danger. In the event of a fire, the alarm system generates a loud intermittent tone distinctly different than a burglar alarm.



In homes with more than one sleeping area a smoke detector (indicated by an inverted "s" in a circle) should be provided to protect each area.

3. Plan and practice an escape plan. A fire alarm warning may be wasted unless the family has planned for a quick evacuation. Because there may be very little time between detection of a fire and the time it becomes deadly, it is important that every member of the family understand exactly what to do.



Possible escape routes through open windows marked with arrows.

Primary and alternate escape routes should be established. Since stairwells and hallways may be blocked during a fire, exiting through a bedroom window at night should be an essential part of the escape plan. If the sleeping area is above the ground floor, provide a means for safely descending outside the building if one does not already exist.

As part of this plan, all family members should arrange to meet at a predetermined location away from the house (such as a neighbor's), to verify that all are accounted for.

In Case of Fire

1. The primary purpose of a fire warning system is to protect lives. In the event of a fire alarm, quickly leave the building and call the fire department from a neighbor's or public telephone.
2. If it is determined the alarm was accidentally tripped, the bell should be silenced, the detectors reset and your alarm company notified immediately of the situation.

Emergency Keys

There are three emergency keys across the top of the keypad. These keys perform system functions when pressed twice. Your alarm technician programs the Emergency Keys.

Remember, press the key two times to perform an emergency function.

Emergency Key	Function
Left (A)	_____
Center (B)	_____
Right (C)	_____

Reporting to the Security Company

- My system reports to my security company.
- My system does not report to my security company.

Your system may be programmed to send a "closing" report to your security company when you turn it on, and an "opening" report when you turn it off.

- My system sends opening and closing reports.
- My system does not send opening and closing reports.

Your security system automatically disconnects your telephone from its line when it sends reports to your security company. This prevents reports from being interrupted during transmission. Once the report has been completed, the telephone line is restored to normal service.

Note: If damage occurs to the telephone line and your telephone service is interrupted, reports will not be sent to your security company unless an alternate means of transmitting signals is installed in your system.

Passcode Privileges

Users can have one of three passcode types: Owner, User, or One-Time.

- **Owner** type passcodes can re-configure how the system responds to "watched" points. This feature is described in *Watch ~Test* in the *User Cards*. In addition, the Owner passcode can be used to change other users' "type" and can change other users' passcodes. The type and passcode change features are described in the pages that follow.
- **User** type passcodes are given to most users of the system, and allow all but owner functions to be performed.
- **One-Time** passcodes allow the user to disarm the system one time only. You can give them to temporary users, such as housekeepers or service workers.

Show User

The Show User mode shows each user's passcode type on lights 1 to 8. The type for Code 1 displays on light 1 and so on.

Flash (fast blink) — Owner type

Wink (slow blink) — User type

On — One-Time type

Off — Disabled passcodes and One-Time passcodes that have been used once to turn the system off.

To renew One-Time passcodes:

1. Press Key **6** to enter Show User Mode.
2. Enter your passcode. (Owner type required.)
3. Press **9** to renew all One-Time passcodes. Lights for One-Time passcodes turn on.
4. Press **Clear** to exit Show User Mode.

To change Passcode Types:

1. Press Key **6** to enter Show User Mode.
2. Enter your passcode. (Owner type required.)
3. Press keys **1** to **8** to toggle the passcode type. Key **1** for User 1 and so on.

For example, if light 3 is winking (User Type), pressing key **3** changes the code type for user 3 to One-Time. Light 3 changes from wink to on.

Pressing **3** again disables the passcode; light 3 is off.

Pressing key **3** a third time changes to Owner; light 3 flashes.

You can not change your own passcode type.

To "remove" a passcode, change its type to disabled.

4. Press the **Clear** key to exit Show User mode.

To change other users' passcodes:

1. Press Key **6** to enter Show User Mode.
2. Enter your passcode. (Owner type required.)
3. Press **0**.

The **Part** light begins flashing. You are now in Owner Passcode Change Mode.

4. Enter the number of the passcode you want to change (1 to 8).
5. Enter a new passcode **with the same number of digits as your passcode**.

The OK tone sounds.

If the error tone sounds, go to step 4. Try a different passcode.

6. Enter the new passcode again.

The OK tone sounds. Go to step 4 to change another passcode or step 7 to continue.

If the error tone sounds, return to step 4. Be sure to enter the same passcode in steps 5 and 6.

7. After changing a passcode you should check its user type.

Press **Clear** once to go back to Show User mode. See *To Change Passcode Type*, step 3 on Page 5.

8. Press **Clear** a second time to exit the Passcode Change mode.

Security System Limitations

Not even the most advanced security system can guarantee protection against burglary, fire, or environmental threats. All security systems are subject to possible compromise or failure-to-warn for a variety of reasons including, but not limited to, the following:

- If sirens or horns are placed outside the hearing range of people in remote areas of the building or in areas which are frequently closed off, they do not provide the intended protection.
- If intruders gain access through unprotected points of entry, the system will not detect their entrance.
- If intruders have the technical means of bypassing, jamming, or disconnecting all or part of the system, they will not be detected.
- If the AC power supply is OFF and the backup battery is either missing or dead, sensors will not detect intrusion.
- Smoke detectors cannot detect smoke in chimneys, walls, or roofs, or smoke blocked by a closed door. They may not detect smoke or fire on a level of the building different from the one on which they are located. Smoke detectors may not be able to warn in time about fires started by explosions, improper storage of flammables, overloaded electrical circuits, or other types of hazardous conditions.
- If phone lines are out of service, reports from the security system to the security company cannot be sent. Telephone lines are vulnerable to compromise by several means.

Inadequate maintenance and failure to test are the most common causes of alarm failure. It is strongly recommended that you test your system once a week to be sure that all system components are working properly.

Although having a security system may make you eligible for reduced insurance premiums, the system is no substitute for insurance. Warning devices cannot compensate you for loss of life or property.

User Record

Passcode Number	Type Circle One	Name
1	Owner, User, One-Time, Disabled	_____ _____
2	Owner, User, One-Time, Disabled	_____ _____
3	Owner, User, One-Time, Disabled	_____ _____
4	Owner, User, One-Time, Disabled	_____ _____
5	Owner, User, One-Time, Disabled	_____ _____
6	Owner, User, One-Time, Disabled	_____ _____
7	Owner, User, One-Time, Disabled	_____ _____
8	Owner, User, One-Time, Disabled	_____ _____